

COASTER®

Fine Furniture

902899

DONNY
OSMOND home™

BY DONNY & DEBBIE OSMOND

CHAIR

**ASSEMBLY INSTRUCTIONS
COASTER FINE FURNITURE**



www.coastercompany.com

ASSEMBLY INSTRUCTION

ASSEMBLY TIPS:

- 1: Remove legs from box and sort by size.
- 2: Please check to see that all hardware and parts are present prior to start of assembly.
- 3: Please follow attached instructions in the same sequence as numbered to assure fast & easy assembly.



warning

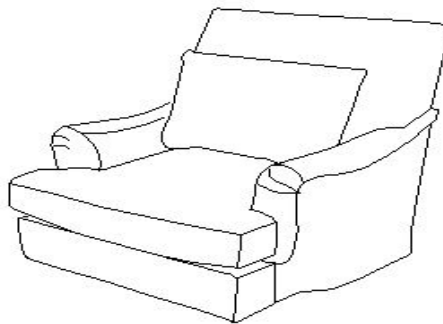
- 1: Don't attempt to repair or modify parts that are broken or defective please contact the store immediately.
- 2: This product is for home use only and not intended for commercial establishment.



ASSEMBLY TIME PER UNIT:	15 MINUTES
-------------------------	------------

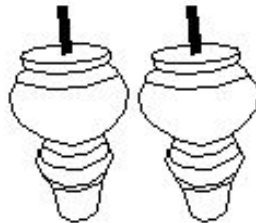
PARTS IDENTIFICATION:

(A) SEAT



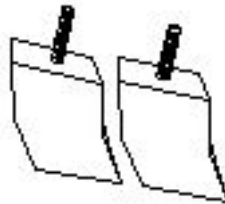
1 PC

(B) FRONT LEG



2 PCS

(C) REAR LEG

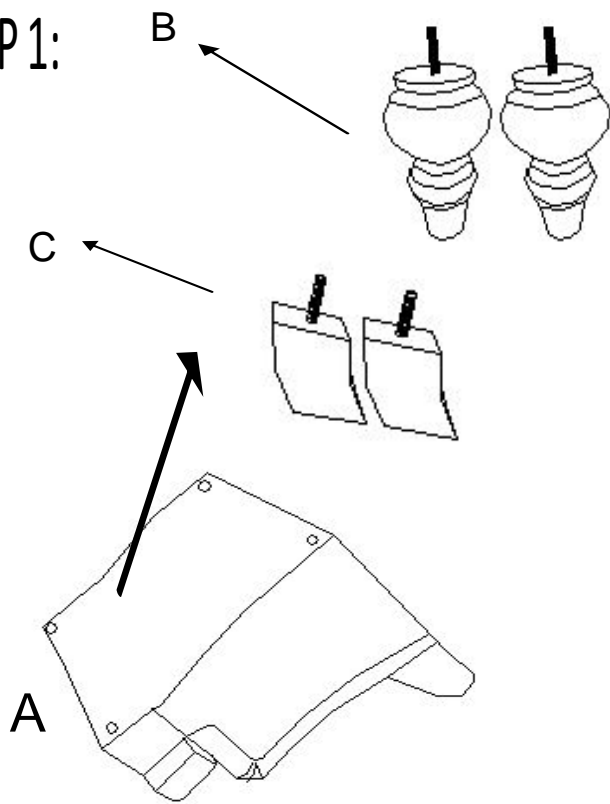


2 PCS

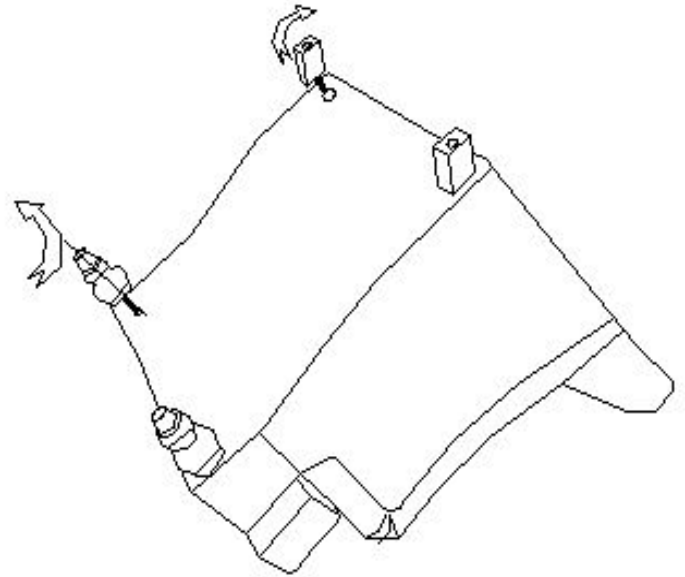
COASTER[®]
Fine Furniture

www.coastercompany.com

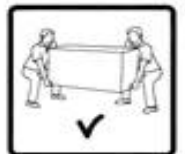
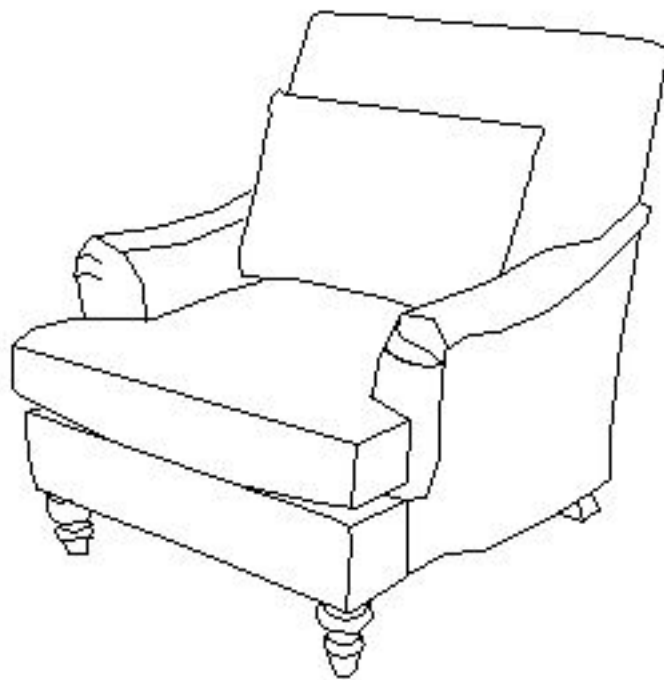
STEP 1:



STEP 2:



STEP 3:



COASTER[®]
Fine Furniture

www.coastercompany.com